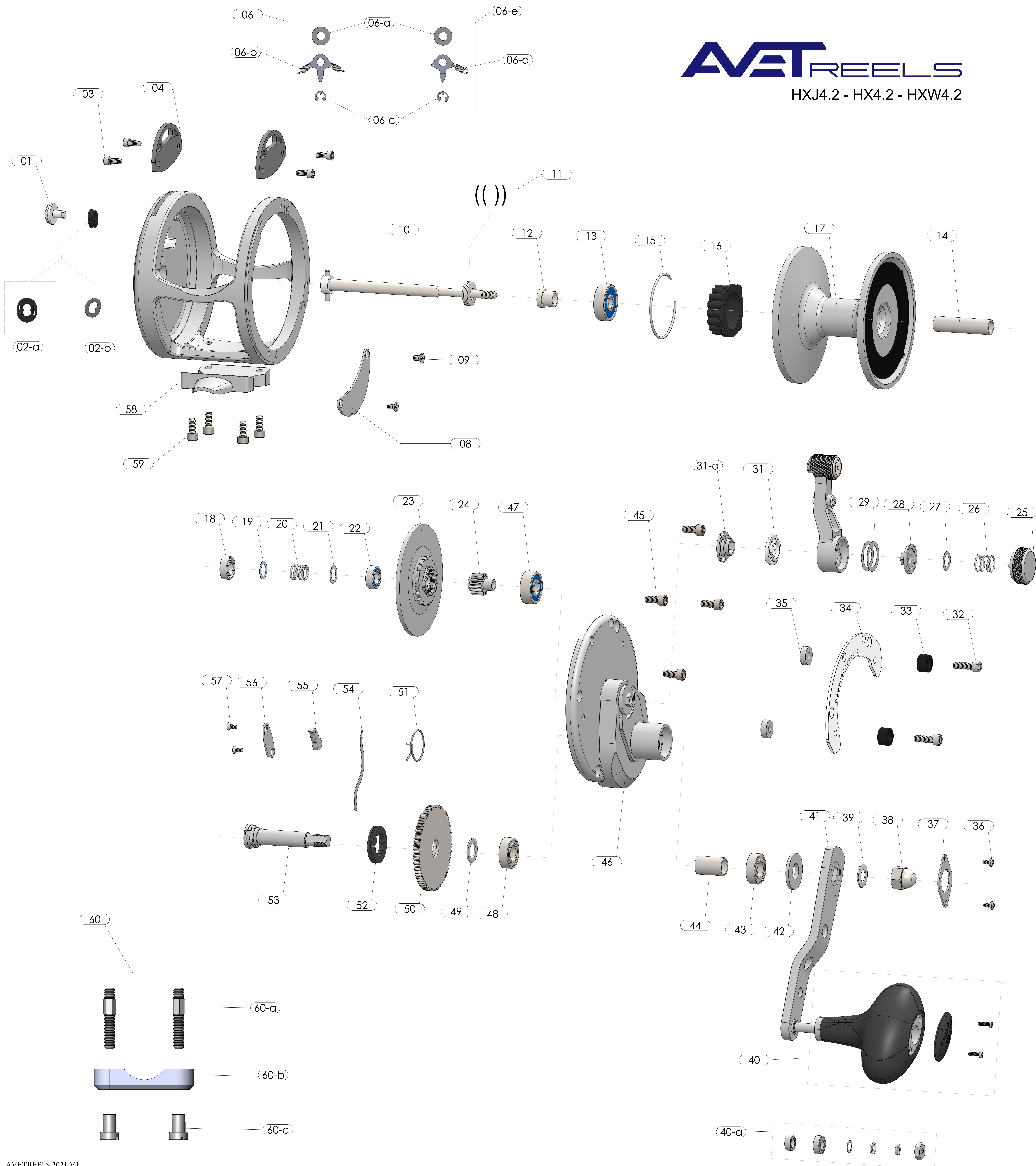
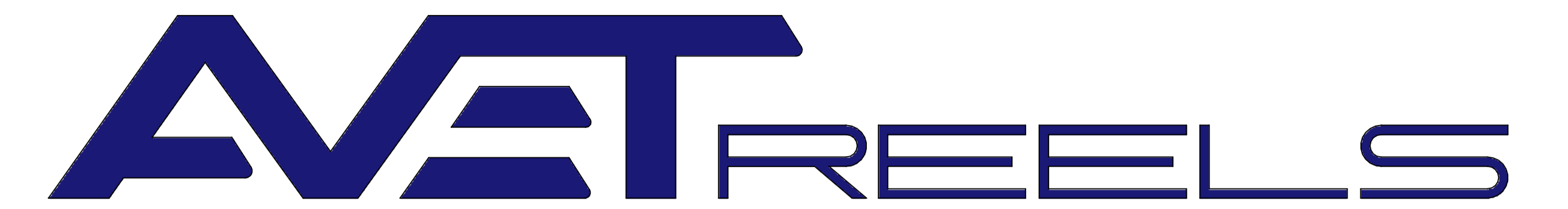


# AVET REELS

HXJ4.2 - HX4.2 - HXW4.2





HXJ4.2 - HX4.2 - HXW4.2

- 01. CLICKER BUTTON
- 02-a. CLICKER HOUSING ( OLD STYLE )
- 02-b. CLICKER HOUSING ( NEW STYLE )
- 03. HARNESS LUG SCREW ( PACK OF 2 )
- 04. HARNESS LUG
- 05. FRAME
- 06. CLICKER SET ( OLD STYLE )
- 06-a. CLICKER WASHER
  - 06-b. CLICKER DOG ( OLD STYLE )
  - 06-c. E-CLIP
  - 06-d. CLICKER DOG ( NEW STYLE )
  - 06-e. CLICKER SET ( NEW STYLE )
- 08. GEAR COVER
- 09. GEAR COVER SCREW ( PACK OF 2 )
- 10. SPOOL SHAFT
- 11. BELLEVILLE WASHERS ( PACK OF 4 )
- 12. THRUST BUSHING
- 13. SPOOL BEARING
- 14. SPOOL TUBE
- 15. CLICKER GEAR RETAINER RING
- 16. CLICKER GEAR
- 17. SPOOL
- 18. SPOOL BEARING
- 19. THRUST WASHER
- 20. DRAG SPRING
- 21. THRUST WASHER
- 22. DRAG BEARING
- 23. BRAKE DISC
- 24. PINION GEAR
- 25. PRESET KNOB
- 26. PRESET KNOB SPRING
- 27. PRESET KNOB SPRING WASHER
- 28. PIVOT PLATE
- 29. PIVOT WASHER ( PACK OF 2 )
- 30. LEVER
- 31. FEMALE CAM
  - 31-a. MALE CAM
- 32. BUMPER SCREWS ( PACK OF 2 )
- 33. LEVER STOP BUMPER ( PACK OF 2 )
- 34. GLIDE PLATE
- 35. GLIDE PLATE SPACER
- 36. ACORN NUT LOCK PLATE SCREWS ( PACK OF 2 )
- 37. ACORN NUT LOCK PLATE
- 38. ACORN NUT
- 39. ACORN NUT WASHER
- 40. HANDLE KNOB
  - 40-a. HANDLE KNOB INSIDE SET
- 41. HANDLE ARM
- 42. HANDLE ARM THRUST WASHER
- 43. DRIVE SHAFT BEARING
- 44. ENDDHOUSE TUBE
- 45. ENDDHOUSING SCREW ( PACK OF 4 )
- 46. ENDDHOUSING
- 47. PINION BEARING
- 48. DRIVE SHAFT BEARING
- 49. THRUST WASHER
- 50. DRIVE SHAFT GEAR
- 51. FRICTION RING
- 52. ANTI REVERSE FRICTION RIGN KNOB
- 53. DRIVE SHAFT
- 54. ANTI REVERSE CONNECTING ARM
- 55. DOG
- 56. DOG COVER
- 57. DOG COVER SCREW ( PACK OF 2 )
- 58. REEL FOOT
- 59. REEL FOOT SCREW ( PACK OF 4 )
- 60. CLAMP SET
  - 60-a. CLAMP SCREW ( PACK OF 2 )
  - 60-b. CLAMP
  - 60-c. CLAMP NUT ( PACK OF 2 )