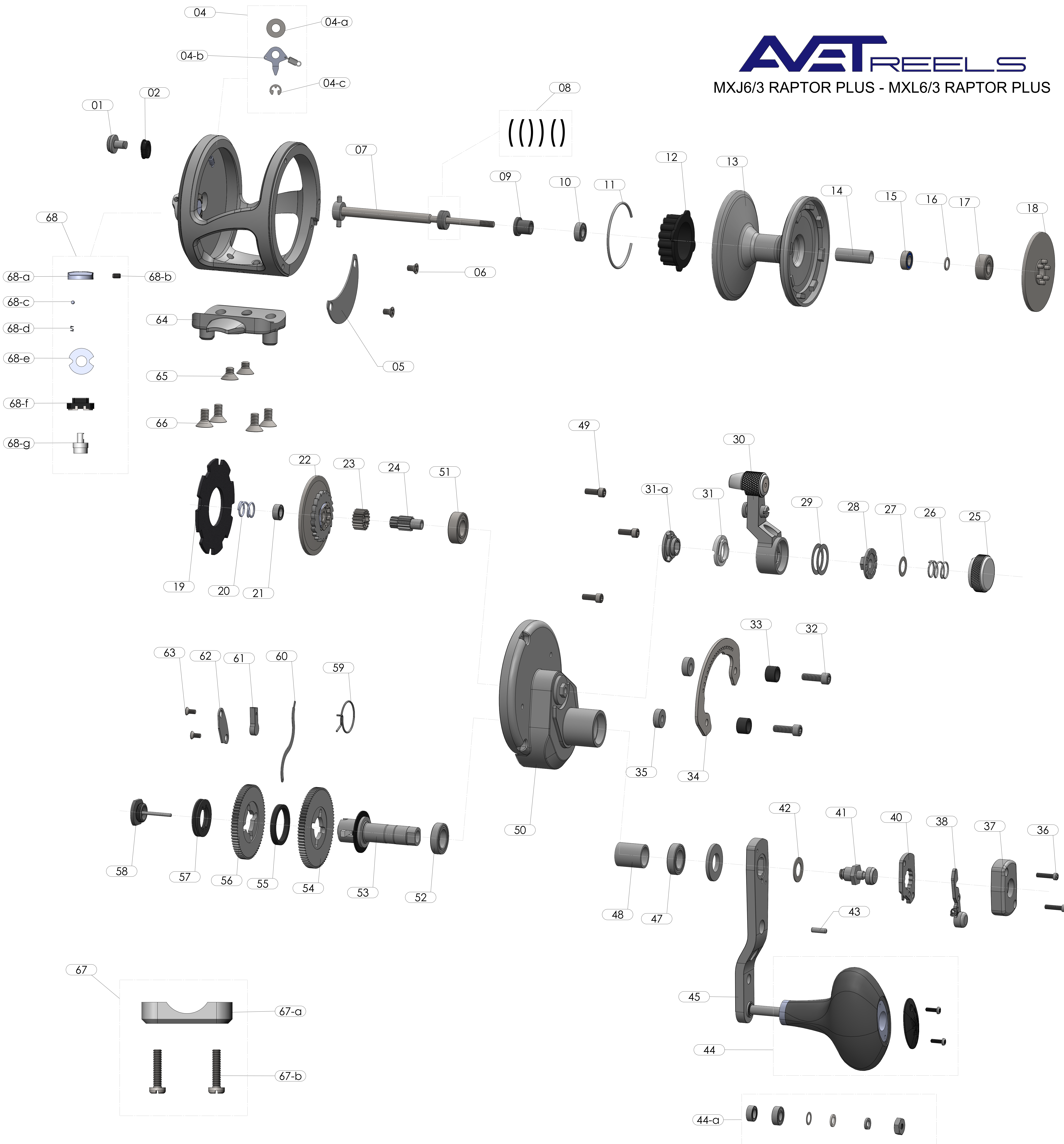
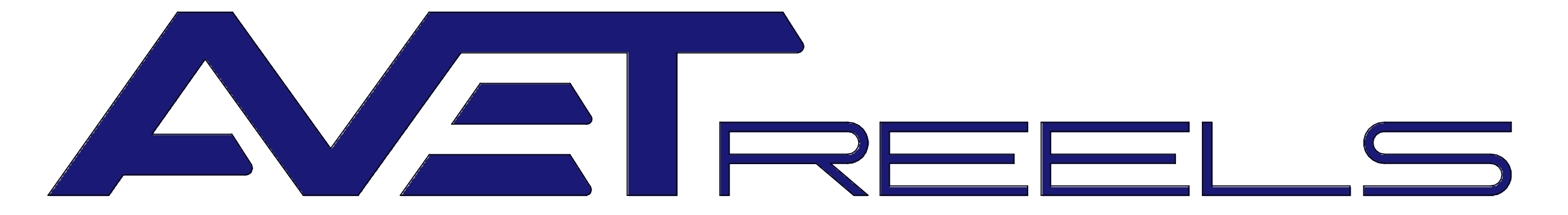


AVET REELS

MXJ6/3 RAPTOR PLUS - MXL6/3 RAPTOR PLUS





MXJ6/3 RAPTOR PLUS - MXL6/3 RAPTOR PLUS

- 01. CLICKER BUTTON
- 02. CLICKER HOUSING
- 03. FRAME
- 04. CLICKER SET (OLD STYLE)
 - 04-a. CLICKER WASHER
 - 04-b. CLICKER DOG
 - 04-c. E-CLIP
- 05. GEAR COVER
- 06. GEAR COVER SCREW (PACK OF 2)
- 07. SPOOL SHAFT
- 09. BELLEVILLE WASHERS (PACK OF 6)
- 09. THRUST BUSHING
- 10. SPOOL BEARING
- 11. CLICKER GEAR RETAINER RING
- 12. CLICKER GEAR
- 13. SPOOL
- 14. SPOOL SHAFT TUBE
- 15. SPOOL BEARING
- 16. THRUST WASHER
- 17. INNER BRAKE DISC BEARING
- 18. INNER BRAKE DISC
- 19. BRAKE PAD
- 20. DRAG SPRING
- 21. OUTER BRAKE DISC BEARING
- 22. OUTER BRAKE DISC
- 23. LARGE PINION GEAR
- 24. SMALL PINION GEAR
- 25. PRESET KNOB
- 26. PRESET KNOB SPRING
- 27. PRESET KNOB SPRING WASHER
- 28. PIVOT PLATE
- 29. PIVOT PLATE WASHER (PACK OF 2)
- 30. LEVER 30
- 31. FEMALE CAM
 - 31-a. MALE CAM
- 32. BUMPER SCREW (PACK OF 2)
- 33. LEVER STOP BUMPER (PACK OF 2)
- 34. GLIDE PLATE
- 35. GLIDE PLATE SPACER (PACK OF 2)
- 36. PUSH KNOB COVER SCREW (PACK OF 2)
- 37. PUSH KNOB COVER
- 38. RELEASE ARM
- 39. RELEASE ARM SPRING
- 40. PUSH KNOB LOCK PLATE
- 41. PUSH KNOB
- 42. PUSH KNOB WASHER
- 43. RELEASE ARM PIN
- 44. HANDLE KNOB
 - 44-a. HANDLE KNOB INSIDE SET
- 45. HANDLE ARM
- 46. HANDLE ARM THRUST WASHER
- 47. DRIVE SHAFT BEARING
- 48. ENDOUSING TUBE
- 49. ENDOUSING SCREW (PACK OF 3)
- 50. ENDOUSING
- 51. PINION BEARING
- 52. DRIVE SHAFT BEARING
- 53. DRIVE SHAFT
- 54. DRIVE SHAFT LARGE GEAR
- 55. DRIVE SHAFT LARGE GEAR SPACER
- 56. DRIVE SHAFT SMALL GEAR
- 57. ANTI REVERSE FRICTION RIGN KNOB
- 58. DRIVE SHAFT STOP NUT
- 59. FRICTION RING
- 60. ANTI REVERSE CONNECTING ARM
- 61. DOG
- 62. DOG COVER
- 63. DOG COVER SCREW (PACK OF 2)
- 64. REEL FOOT
- 65. REEL FOOT INNER SCREW (PACK OF 2)
- 66. REEL FOOT OUTER SCREW (PACK OF 4)
- 67. CLAMP SET
 - 67-a. CLAMP
 - 67-b. CLAMP SCREW (PACK OF 2)
- 68. MC SET
 - 68-a. MC KNOB
 - 68-b. MC SET SCREW
 - 68-c. MC BALL
 - 68-d. MC SPRING
 - 68-e. MC WASHER
 - 68-f. MC HOUSING
 - 68-g. MC SHAFT